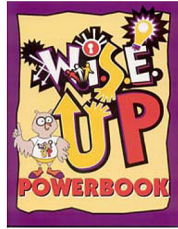


**W.I.S.E. Up!**<sup>SM</sup> provides a simple but powerful way for adopted children (and families) to handle comments and personal questions about their adoption journey.

Sunny Ridge is pleased to offer the **W.I.S.E. Up!**<sup>SM</sup> Workshop, a unique and interactive workshop developed by the Center for Adoption Support and Education (C.A.S.E.).

### Who should attend this Workshop?

This Workshop offers practical tools for adoptive parents and adopted children between 1st and 6th grade (adopted both internationally and domestically) to guide them in making choices on how to respond to uncomfortable or personal questions about their adoption. Space is limited to 10 children and 20 adults.



**For information:  
Visit our website at  
[www.sunnyridge.org](http://www.sunnyridge.org),  
to learn about upcoming dates  
and locations for  
**W.I.S.E. Up!**<sup>SM</sup> Workshops.**

**Schedule a W.I.S.E. Up!**<sup>SM</sup>  
**Workshop Today!**  
**Contact Pam Shepard at  
(630) 754-4522, for scheduling or  
additional information.**

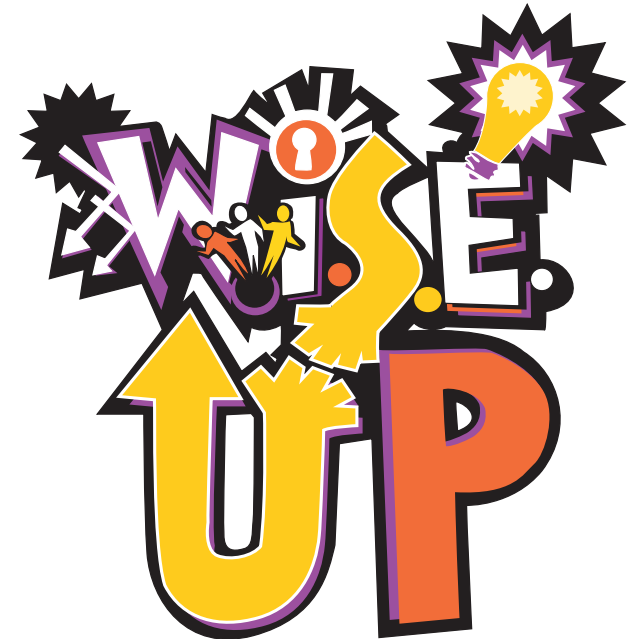
Since 1979, Sunny Ridge Family Center has served children and built families through adoption. Sunny Ridge has placed over 3,000 children from 46 countries into loving families. A caring team of experienced professionals help guide families along the journey of adoption. Sunny Ridge provides comprehensive adoption services, including home studies and post adoption services.

*Sunny Ridge is an Illinois Licensed Child Welfare Agency, License #019976.*

**Sunny Ridge Family Center**  
[www.sunnyridge.org](http://www.sunnyridge.org)

270 Remington Boulevard, Suite C | Bolingbrook, Illinois 60440  
(630) 754-4500

## A Post Adoption Workshop for Children & Adults



**Sunny Ridge Family Center**

## What do people say to your child about adoption? Does your child know how to W.I.S.E. Up their friends, peers and neighbors about adoption?

*"The W.I.S.E. Up! Program is a simple but powerful way for adopted children (and their families) to answer personal questions. We can't choose the questions others ask us, but we can choose our responses. What makes the W.I.S.E. Up! Program so important is that it really works!"*

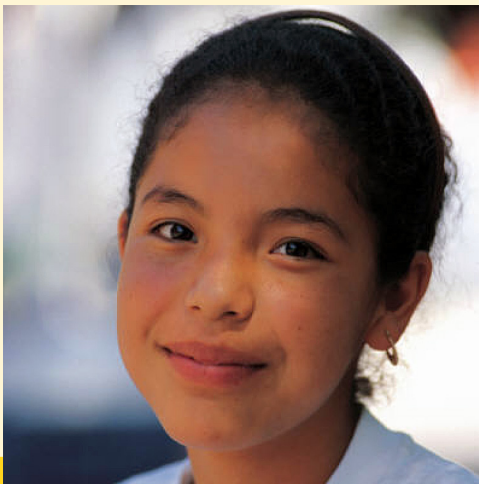
*-Jana Wolff, author **Secret Thoughts of An Adoptive Mother***

*"Families and children can have a good time and learn a lot about how each other feels when using the wisely constructed W.I.S.E. Up! Powerbook! A must!"*

*-Joyce Maguire Pavao, author of **The Family of Adoption***

*"It was a megahit. Our support group introduced it and we've heard reports back already about kids using it and instructing other adopted friends about it. Please accept our thanks for developing something so empowering. This is strategy applies to many things in their young lives."*

*-Mary Pat Kochenash, Adoptive Parents Organization of Central NJ*



## What Does The Workshop Look Like?

The W.I.S.E. Up!<sup>SM</sup> Workshop is a two-hour workshop designed to empower children and adults to deal with personal questions and comments related to adoption.

Children and adults break up into separate groups for the Workshop. Through a series of activities, discussions, and role playing, children learn the "W.I.S.E. Up" way to answer personal questions about adoption.

During this time, adults attend their own interactive presentation—designed to equip parents with strategies and techniques which best support our adoptive children as they encounter personal questions related to adoption.

The W.I.S.E. Up!<sup>SM</sup> Workshop concludes with time for questions and answers, followed by time where children gather with their parent(s) for parent/child discussion on Workshop skills learned.

The W.I.S.E. Up!<sup>SM</sup> Workshop can be presented at two age-levels, either designed for children grades 1 through 3, or for grades 4 through 6. Workshop space is limited to 10 children and 20 adults.

## Frequently Asked Questions

### How do I attend?

Individuals and families can visit [www.sunnyridge.org](http://www.sunnyridge.org), to learn about upcoming W.I.S.E. Up!<sup>SM</sup> Workshops in their area.

### Can my organization host a W.I.S.E. Up!<sup>SM</sup> Workshop for its members?

Yes. Sunny Ridge can present a W.I.S.E. Up!<sup>SM</sup> Workshop to your group or community organization. Workshops can be scheduled at the Sunny Ridge Training Center in Bolingbrook, Illinois—or at your location.



### How much does the Workshop cost?

A participant fee of \$100 per family (two parents and one or two children) is paid by each family. Adult participants with no children pay \$75.

For organizations hosting off-site Workshops, other fees such as travel, cancellation, and minimum participant fees apply.

### Who conducts the Workshops?

W.I.S.E. Up!<sup>SM</sup> Workshops are facilitated by social workers of Sunny Ridge Family Center, and trained by the Center for Adoption Support and Education (C.A.S.E.) to deliver W.I.S.E. Up!<sup>SM</sup> Workshops.

### How do we get started?

Contact Pam Shepard at (630) 754-4522, for scheduling or additional information.